

IMPORTANT NOTE



All assembly instructions must be followed to ensure the safe operation of this patio door. Failure to follow these instructions may reduce the safety and security of the product and will invalidate the guarantee.

Please pay particular attention to the “Safety and Security” points when installing these doors.

Please note some parts of this product may need two or more persons to lift. Lifting aids like sucker clamps will also ease the handling.

Ref D3_M_0011-A



Fitting and Care Instructions for

JELD-WEN Flockton Patio French Door Set

INTRODUCTION

JELD-WEN timber patio doors are designed and manufactured in Britain and use toughened safety glass to the highest specifications of BS. 6206.

They are fully weather stripped to improve performance.

The patio is made from timber which is preservative treated for long life. It is supplied in sub-assembled form ready for you to install. The 3 packs contain all the components you need for easy assembly.

Before commencing assembly read through the instructions VERY carefully, locating and identifying each component.

For the best results we recommend that fully factory decorated products are used. Alternatively decorating of all components before assembly and installation will improve the long term life and performance of this product.

Familiarise yourself with all the components and how they fit together.

All nails/screws for assembly of the timber frames are supplied.

OTHER MATERIALS REQUIRED FOR CORRECT INSTALLATION

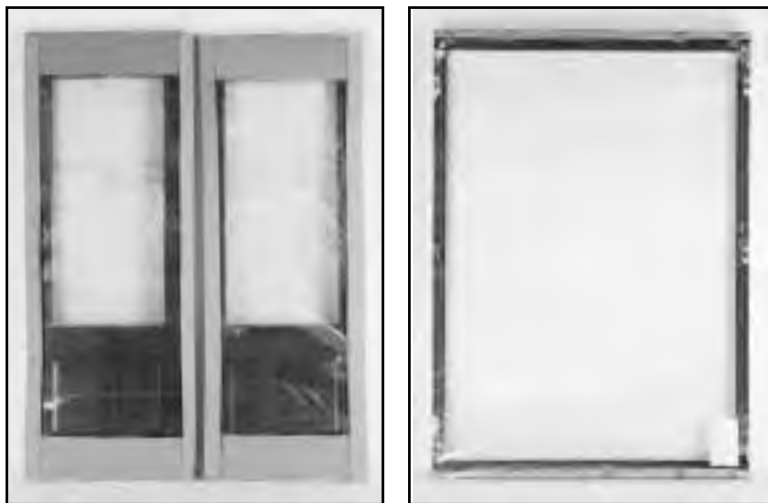
1. External wood adhesive
2. Non-corrosive masonry fixings to fix the timber frame to the structure (not supplied, dependant by structure type)
3. Mastic sealant (to the surrounding brickwork)
4. High build stain or paint system
5. Damp Proof Course (d.p.c)
6. Wedges and packers (for frame positioning)

TOOLS REQUIRED FOR CORRECT INSTALLATION

1. Power drill and drill bits
2. Tape measure (5 metre)
3. Spirit level (1 metre minimum)
4. Screw driver (Pozidrive and slotted sets)
5. Hammer
6. Paint brush
7. Allen Keys

IMPORTANT POINTS

△ To avoid problems at a later date it is extremely important to ensure that the frame is fixed in position square and that the sill is level, and fully supported.



2 Door Leaves and Frame

Building Regulations

This product is fitted with Low E glass, air filled double glazed units. When correctly installed the product will have a U-value of 2.0 W/m²K in compliance with 2002 Amendments to Approved Document L suitable for all applications.

From April 2006 the requirements of Approved Documents L and F will change, please consult with your building designer to ensure compliance with these requirements.

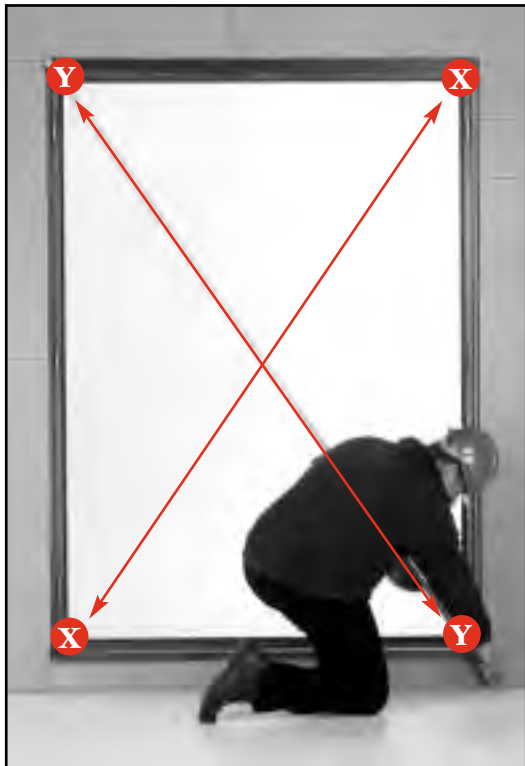
Fitting and Care Instructions for

JELD-WEN Flockton Patio French Door Set

Frame Installation



- 1 Determine the frame fixing method - if brackets or straps are required these must be prefitted to frame. Fit into opening with sill projecting clear of structure. Wedge frame temporarily into the opening.



- 2 Check frame for squareness across the diagonals. $XX=YY$.



Safety and Security

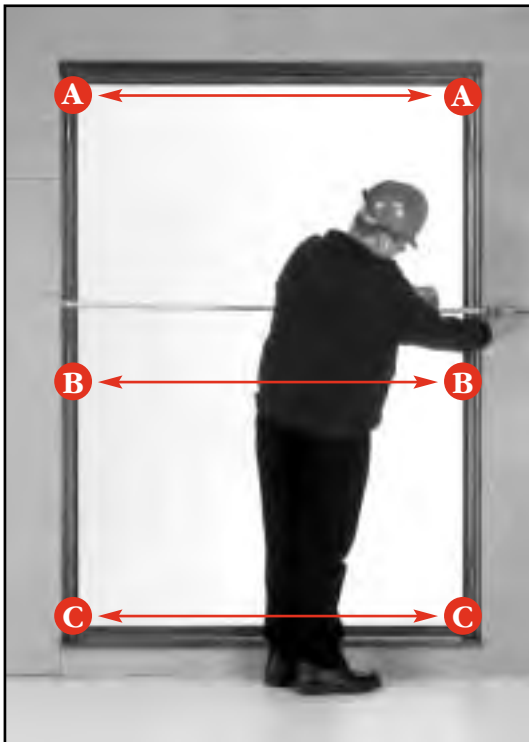
- 3 The sill must be level. Pack beneath it to stop movement and ensure it is fully supported.



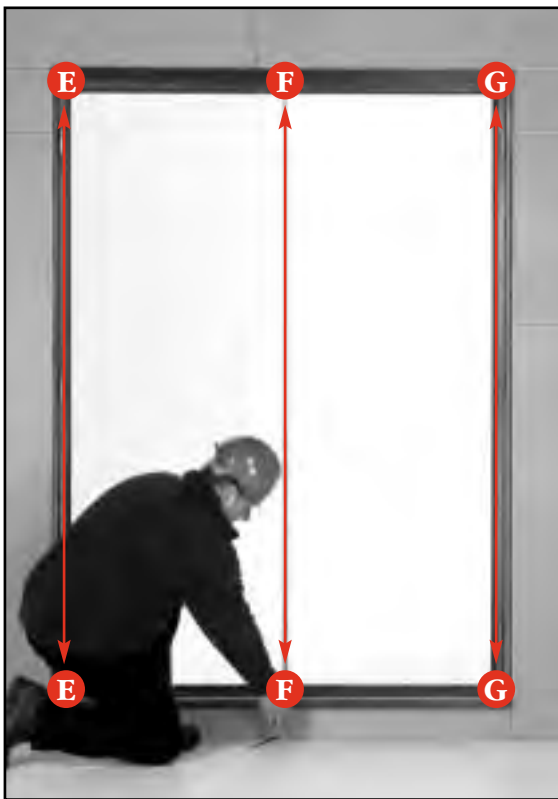
- 4 Check frame is plumb.

Fitting and Care Instructions for

JELD-WEN Flockton Patio French Door Set



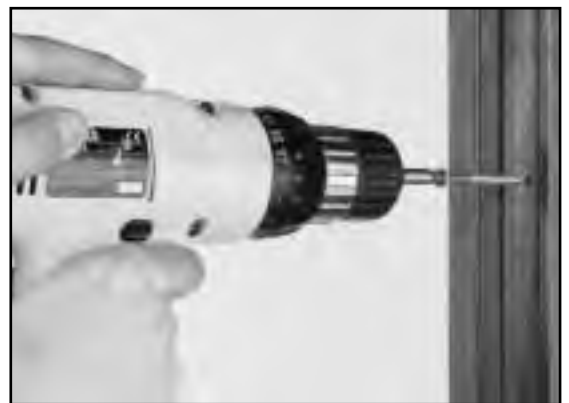
- 5 Check the horizontal dimensions, wedge and pack as required to ensure all are equal i.e. $AA=BB=CC$.



- 6 Check vertical dimensions are equal i.e. $EE=FF=GG$
Pack as required.



- 7 Wedge and pack as required to ensure level, plumb and square.



- 8 Drill and fix through frame with 450mm between fixings, (fixings not supplied, determined by structure type). Alternatively, use brackets or straps as required by building detail (see step 1)

Safety and Security

Frame must be securely fixed to the structure before installation continues.

Fitting and Care Instructions for

JELD-WEN Flockton Patio French Door Set

Hinged Doors



9 Fit right hand hinged door into place lifting into hinges. Insert hinge pins loosely into position. Note: **Do not** knock pins fully in at this stage.

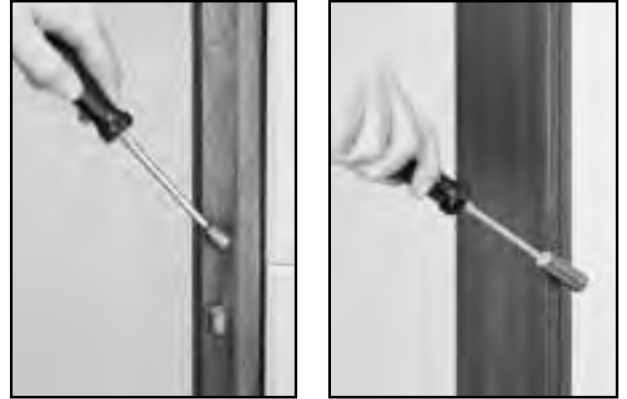
10 Repeat for left hand door.



11 Fit handle set with screws on the inside.

Door Adjustments

Operate doors and check for alignment.



12 If necessary, adjust hinge knuckles until two doors engage, lock and operate correctly.



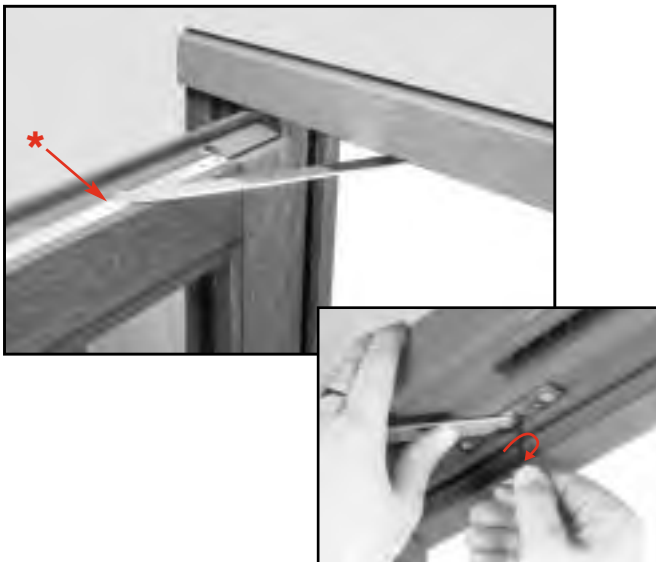
13 Check finger bolts engage fully into keeps on frame.

Fitting and Care Instructions for

JELD-WEN Flockton Patio French Door Set



14 When correctly adjusted tap hinge pins fully into place.



15 Connect restrictor arms to prefitted keeps in head.

Restrictor Arm Friction Adjustment

The restrictor slides on the top edge of each door are fitted with adjustable friction screws.

* Using the same Allen key as step 15 above, friction can be adjusted by turning each screw. This provides increased safety and convenience, particularly in windy conditions.

Safety and Security



16 Seal the joint between the outer frame and brickwork with suitable mastic sealant.



17 The completed patio.

Keep these instructions for future reference.

Care and Maintenance

By taking care of your patio with the following simple actions, it will give many years of trouble free service.

1. Ensure doors are kept clean and free of obstruction.
2. Occasional adjustment of hinges may be required depending on frequency of use. See step 12 of these instructions.
3. Lightly lubricate moving parts periodically, at least once every 12 months.
4. Redecorate all timber components every 5 years, or more frequently if required.