

This information is intended to be available before the purchase of a Wellington Patio Doorset and is to assist with the design of the supporting structure. More advice is available in the Wellington Patio Doorset Fitting and Care Instructions which will be supplied with the doorset but are also available to download from the eJoinery website or from the eJoinery Sales Office.

The doors of a Wellington Patio Doorset are supported from the track in the head. The track in the sill guides the doors but does not carry any weight. It is therefore absolutely essential to provide suitable fixings through the top track to bear the weight of the doors.

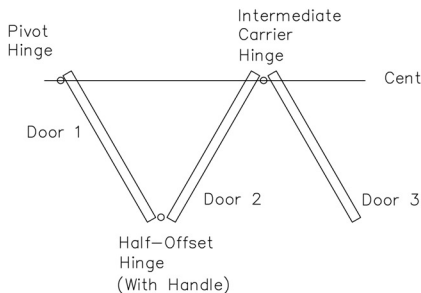
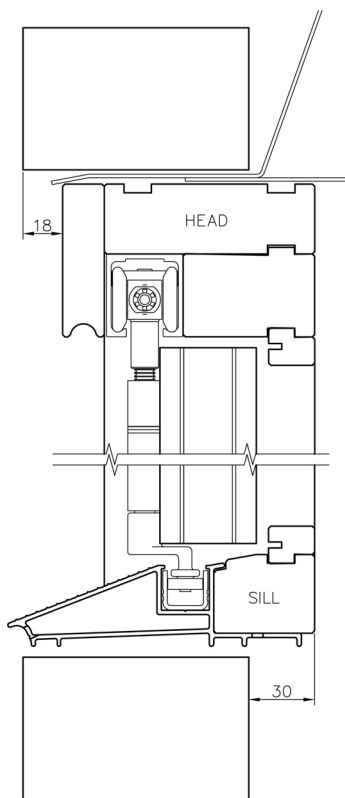
It may be necessary to use the services of a Structural Engineer to determine a suitable supporting structure.

For a new-build project the loads and deflection given below must be considered.

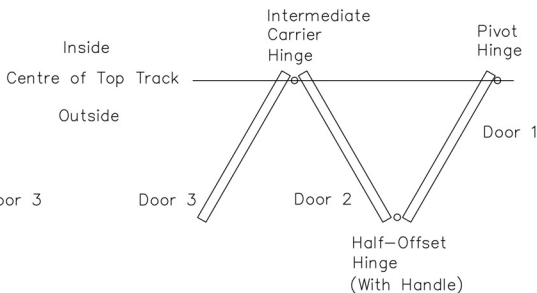
If a doorset or window is to be replaced and the existing lintel re-used to support the top track of the Wellington Patio Doorset care must be taken not to exceed the safe working load of the lintel with the combined loads imposed by the Wellington Patio Doorset and the structure of the building including loads from masonry, floor joists and roof trusses.

This section (right) shows the position of the head track in relation to external brickwork.

The maximum load that is to be supported is 110 kg. This is the combined load of the three doors, glazing and hardware. The maximum permitted deflection of the top track is 3mm.



3L Arrangement



3R Arrangement

Wellington Sliding/Folding Patio Doorset

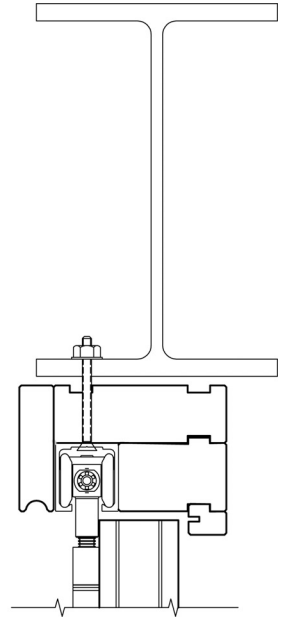
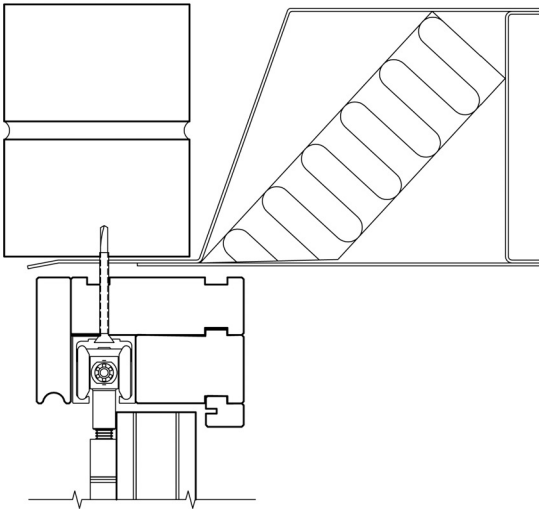
Pre-Installation Information

The load is transferred from the doors through the Top pivot hinge and Top intermediate carrier hinge to the head track. The head track must be secured with the number of fixings and at the positions shown in the table below.

Pivot Hinge Side Patio Module Width	Fixing positions measured from pivot hinge (3L arrangement shown, reverse for 3R arrangement)									Lock Side
	1st	2nd	3rd	4th	5th	6th	7th	8th	9th	
1800mm	100mm	175mm	250mm	325mm	400mm	800mm	1200mm	1695mm		
2100mm	100mm	175mm	250mm	325mm	400mm	800mm	1200mm	1600mm	1995mm	
2400mm	100mm	175mm	250mm	325mm	400mm	800mm	1200mm	1600mm	2000mm	2295mm

The closer spacing of the fixing positions near to the pivot hinge is to support the load of the three doors in the open position.

Various Supporting Structures for the Wellington Patio Doorset



Further advice on the use of steel lintels can be obtained from the SLMA;
Steel Lintel Manufacturers Association, PO Box 10, Newport, South Wales NP19 4XN
Tel: 01633 755113 Fax: 01633 755064 Email: info@slma.co.uk Web: www.slma.co.uk

JELD-WEN UK Windows and External Joinery, Snow Hill, Melton Mowbray LE13 1PD Tel: 01664 484500 Fax: 01664 503403